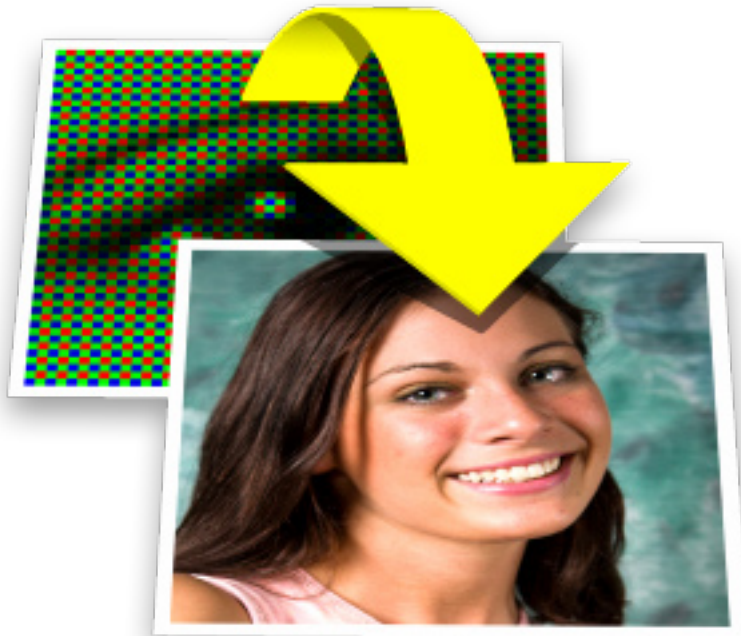


# INSTANT JPEG FROM RAW

**JPEG Extraction Utility  
for Windows® and Macintosh®**

## **User Guide**



# Table Of Contents

<b>1 Introduction</b> .....	<b>1</b>
1.1 What is IJFR? .....	1
1.2 What is an Embedded JPEG? .....	1
1.3 Why do I need this utility? .....	1
1.4 Where can I get this utility? .....	1
<b>2 Installing IJFR</b> .....	<b>2</b>
2.1 Windows Installation .....	2
2.2 Macintosh Installation .....	4
<b>3 Using Instant JPEG from Raw</b> .....	<b>5</b>
3.1 Overview .....	5
3.2 Selecting Files .....	5
3.2.1 In Windows® .....	5
3.2.2 In Macintosh® .....	5
3.3 Running IJFR .....	5
3.3.1 Running in Windows® .....	5
3.3.2 Running In Macintosh® 10.4 .....	6
3.3.3 Running In Macintosh® 10.5 (Leopard) .....	6
3.4 IJFR Preferences .....	6
3.4.1 Native size only .....	7
3.4.2 Native and smaller sizes .....	7
3.4.3 Max width and Max height .....	7
3.4.4 Add suffix .....	8
3.4.5 Extract .....	8
3.4.5.1 Scan Report .....	8
3.4.5.1 Extracted File Location .....	9
3.4.6 Save .....	9
3.4.7 Cancel .....	9

RAWWorkflow.com is a division of PictureFlow LLC (a Florida LLC solely owned by Michael Tapes)  
RAWWorkflow.com, WhiBal, "Make better pictures from your pixels" are trademarks of PictureFlow LLC  
Windows® is a trademark of Microsoft Corporation.  
Macintosh® is a trademark of Apple Computer Inc.  
Photoshop® is a trademark of Adobe.  
All other trademarks belong to their rightful owners.  
PictureFlow LLC is not responsible for typographic errors.

# 1 Introduction

## 1.1 What is IJFR?

**InstantJpegFromRaw** (IJFR) is a Windows® and Macintosh® utility that extracts the native JPEG image that is embedded in most RAW files. The utility is available from your cursor's context-sensitive menu by right-clicking (or Ctrl-clicking on a Mac) anytime a Raw file is selected on your PC.

## 1.2 What is an Embedded JPEG?

When cameras are set to capture the RAW format, most manufacturers embed a JPEG image in the RAW file for use when displaying the image on the camera's LCD or in a browser. The embedded JPEG is usually smaller than the native resolution of the camera and is developed using the camera's image settings (ie. white balance, style, exposure) in effect at the time the image was captured. In most cases, the embedded JPEG's quality setting is medium or better.

## 1.3 Why do I need this utility?

While there are many applications that display and output JPEGs from Raw files, there are times when you just want to grab some quick JPEGs to email or view without launching your browser or editing application. IJFR does this right on your desktop using either individual or multiple selected Raw files.

## 1.4 Where can I get this utility?

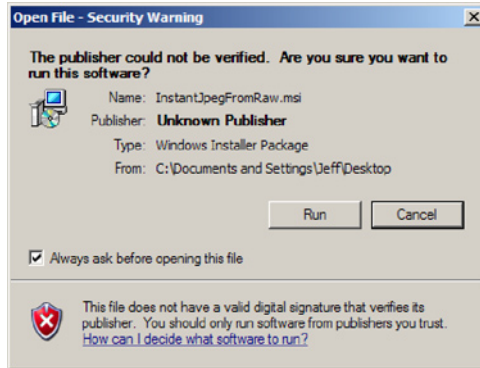
IJFR is a free utility that can be downloaded from RawWorkflow.com. If you find it to be useful, you may want to consider purchasing one or more of our fine products for digital photographers.

## 2 Installing IJFR

### 2.1 Windows Installation

IJFR is installed using the InstantJpegFromRaw.msi installation program. To install IJFR, follow these steps:

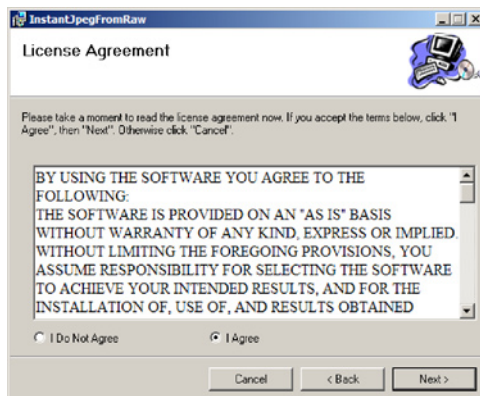
1. Double-click the InstantJpegFromRaw.msi icon in the directory where you downloaded the file. A security warning may appear. Click **Run** to continue with the installation or **Cancel** to exit without installing.



2. A welcome page now appears. Click **Next** to proceed.

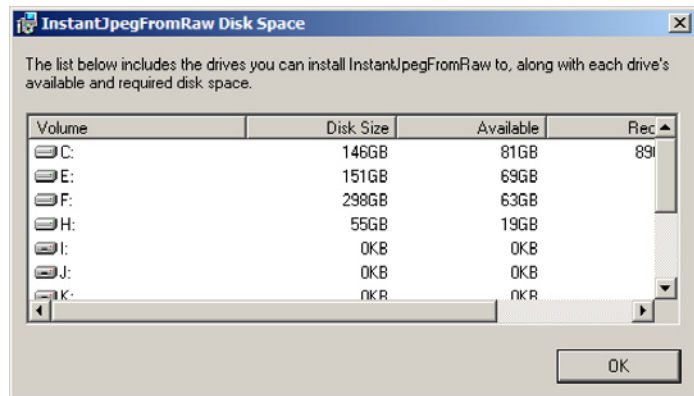
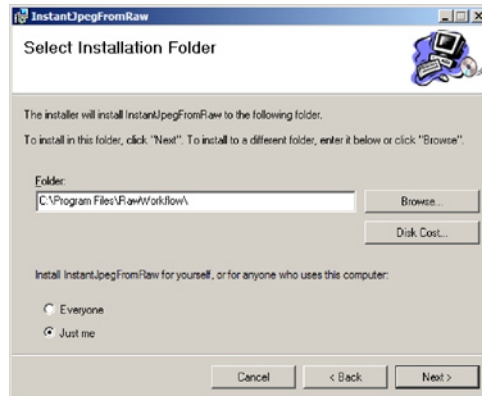


3. You must accept the license agreement in order to install and use IJFR. Click the **I Agree** radio button to accept the agreement, then click **Next** to proceed with the installation.



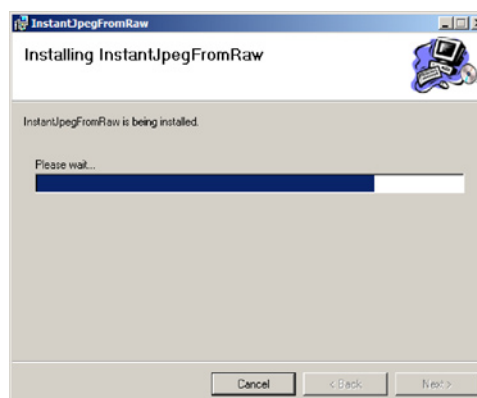
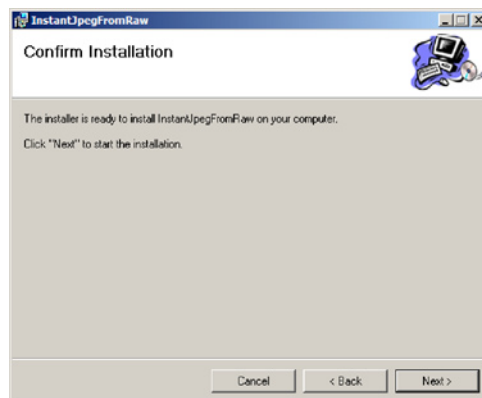
4. You will now be asked to select an installation folder. You can either do nothing to accept the default folder (recommended) or click **Browse...** to select another folder.

Clicking the **Disk Cost...** button displays a list of all drives on your computer along with each drive's available and required disk space. Click OK to close the Disk Space window.

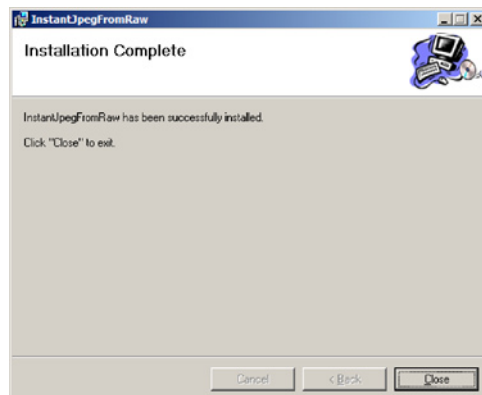


You can make IJFR available to all users of this computer or just the account that is currently logged in. Select **Everyone** for all users or **Just Me** for the current account only, then click **Next** to proceed with the installation.

5. The Confirm Installation window appears. Click Next to install IJFR.



6. The Installing IJFR progress window appears followed by the Installation Complete window. Click **Close** to exit the installation program.



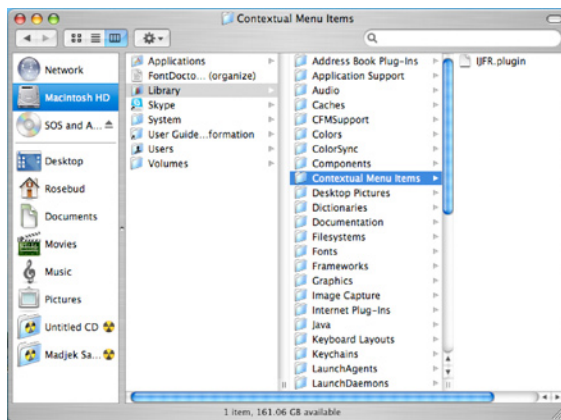
## 2.2 Macintosh Installation

IJFR is installed by dragging the IJFR plug-in into the Contextual Menu Items folder, which is located in the System Disk's Library. To install IJFR, follow these steps:

1. If the IJFR.plugin file was not extracted during download, double-click the IJFRMac.zip file to extract the plug-in. A warning message may appear, indicating that the plug-in contains an application. Click **Continue** to extract the plug-in or **Cancel** to quit without extracting the file.



2. Open a finder window to the System Disk's **Library** folder. Drag the IJFR.plugin file into the **Contextual Menu Items** folder. This completes the installation.



**A note for Mac 10.5 Users:** To install, drag the ijfr.plugin file from downloads to the folder:

(main drive)\library\Contextual Menu Items

It still won't work. Now, on the Apple menu, use force quit to relaunch Finder (don't have anything open that you want to save when you do this). Now it works.

## 3 Using Instant JPEG from Raw

### 3.1 Overview

When IJFR is run on a selected Raw file, the Raw file's embedded JPEG image is extracted and copied to a new folder in the same directory as the selected Raw file(s). You have a choice of saving an additional copy of the JPEG, resized as you choose.

### 3.2 Selecting Files

#### 3.2.1 In Windows®

To select files in Windows®, navigate to the folder where the Raw files are located, then do one of the following:

1. To select a single file, single-click on the file to highlight it, OR
2. To select multiple contiguous files, Hold **Shift** and single-click on the first and last file desired, OR
3. To select or deselect multiple non-contiguous files Hold **Ctrl** and single-click on the files desired.
4. Complete folders of Raw files can be selected for JPEG extraction.

#### 3.2.2 In Macintosh®

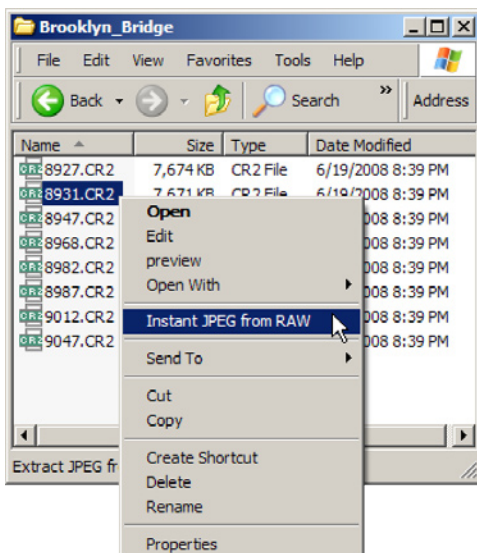
To select files in Macintosh®, navigate to the folder where the Raw files are located, then do one of the following:

1. To select a single file, single-click on the file to highlight it, OR
2. To select multiple contiguous files, Hold **Shift** and single-click on the first and last file desired, OR
3. To select or deselect multiple non-contiguous files Hold **Command** (Apple Key) and single-click on the files desired.
4. Complete folders of Raw files can be selected for JPEG extraction.

### 3.3 Running IJFR

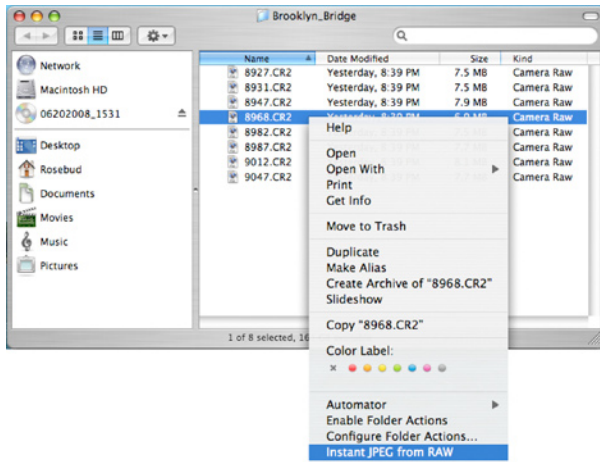
#### 3.3.1 Running in Windows®

IJFR is run by right-clicking on a selected Raw file. Single or multiple Raw files may be selected at the time. From the context-sensitive menu that appears, select **Instant JPEG from RAW**.



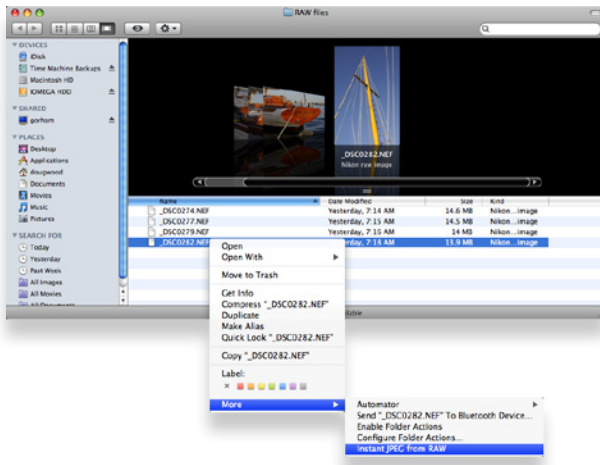
### 3.3.2 Running In Macintosh® 10.4

IJFR is run by holding the Ctrl key and clicking on a selected Raw file. Single or multiple Raw files may be selected at the time. From the context-sensitive menu that appears, select **Instant JPEG from RAW**.



### 3.3.3 Running In Macintosh® 10.5 (Leopard)

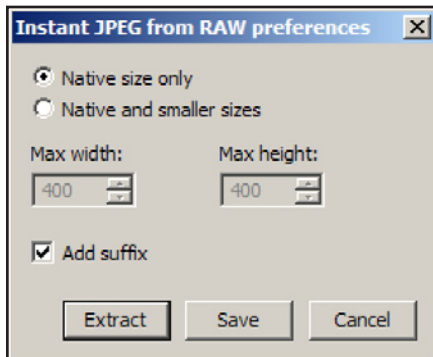
IJFR is run from the **More...** menu which is located in the Main Context Menu. Single or multiple Raw files may be selected at the time. Select **Instant JPEG from RAW**.



## 3.4 IJFR Preferences

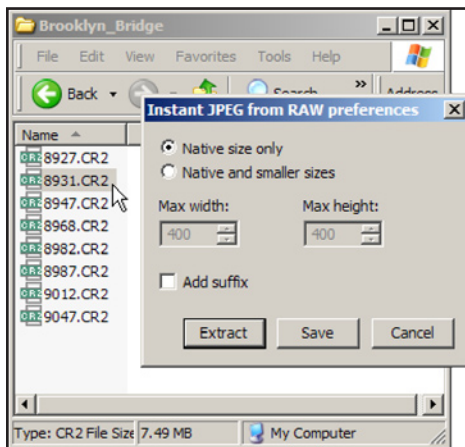
Note: Operation of IJFR Preferences and JPEG Extraction are identical on Windows® and Macintosh® Platforms.

When IJFR is run on a selected Raw file, a Preferences window is displayed for selecting how the embedded JPEG images will be output.



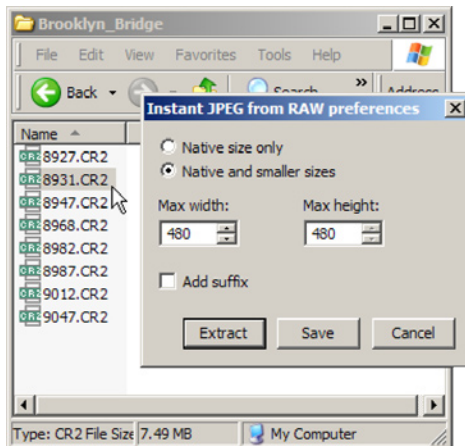
### 3.4.1 Native size only

When **Native size only** is selected, the extracted JPEGs will be the same size as the native JPEG that is embedded in the Raw file. A list of the native JPEG sizes for various manufacturers' cameras can be found in the Appendix at the end of this manual.



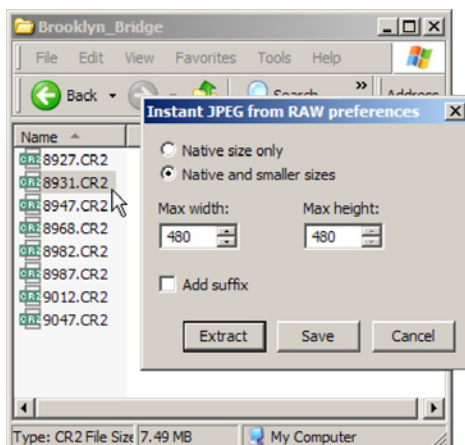
### 3.4.2 Native and smaller sizes

When **Native and smaller sizes** is selected, both the native size and a resized smaller version of the embedded JPEG will be extracted. The size of the smaller version JPEGs is set using the **Max width** and **Max height** text boxes described next.



### 3.4.3 Max width and Max height

When **Native and smaller sizes** is checked, the size of the smaller version JPEGs is set using the **Max width** and **Max height** text boxes. Enter the maximum width and maximum height desired for the smaller version JPEGs.

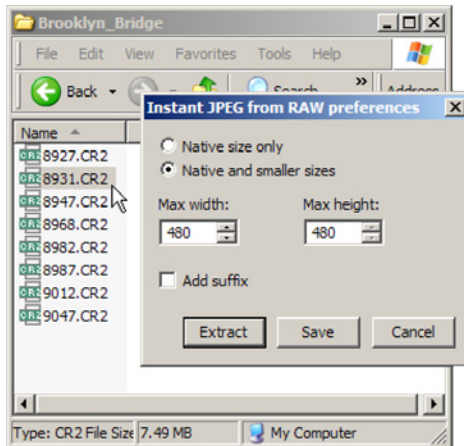


### 3.4.4 Add suffix

When **Add Suffix** is not checked, the extracted JPEG filenames will be the same as the original Raw file.

When **Add suffix** is checked, the Native size extracted JPEG filenames will be the filename of the original Raw file with "\_IJFR" appended (ie. 8931\_IJFR.jpg).

For smaller size JPEGs, the extracted JPEG filenames will be the filename of the original Raw file with "\_IJFR\_largest dimension" appended (ie. 8931\_IJFR\_300.jpg).



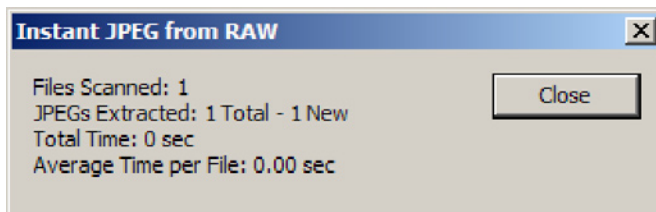
### 3.4.5 Extract

Clicking **Extract** extracts the embedded JPEGs from the selected Raw files according to the preferences you have set. The extracted JPEGs are placed in folders created by IJFR during processing.

#### 3.4.5.1 Scan Report

After processing, a scan report is displayed indicating:

- The number of files scanned.
- The total and new JPEG files that were extracted.
- The total processing time.
- The processing time per file.

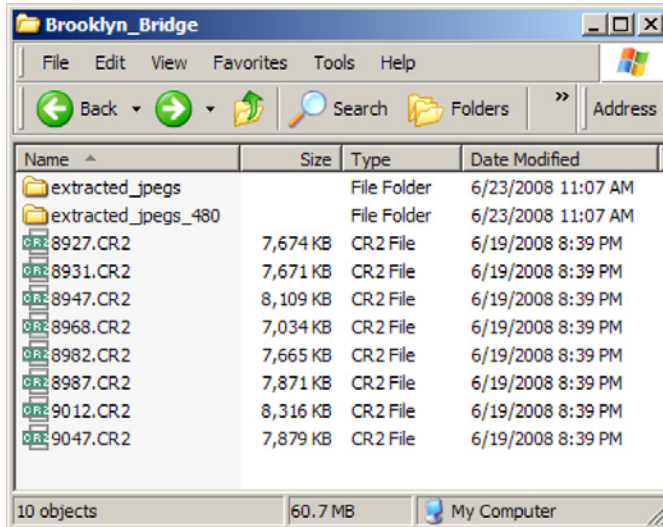


### 3.4.5.1 Extracted File Location

Native size extracted JPEGs are stored in the same directory as the selected Raw files, in a folder named “extracted\_jpegs”.

Smaller size extracted JPEGs are stored in the same directory as the selected Raw files, in a separate folder named “extracted\_jpegs\_largest dimension” (ie. extracted\_jpegs\_480).

When a folder of Raw files is selected for processing, the extracted JPEG folders are created inside the selected folder.



### 3.4.6 Save

Clicking **Save** saves the currently set preferences as the program defaults.

### 3.4.7 Cancel

Clicking **Cancel** exits IJFR without extracting JPEGs or saving preferences.